

# Coastal Lands - Waimakariri - Rakahuri (Ashley)

## A Community Vision

Preliminary Report facilitated by Lucas Associates for the local community



---

# **The Coastal Lands of Waimakariri - Rakahuri (Ashley)**

---

**a preliminary report developing a community vision**



**facilitated & documented by Lucas Associates  
in consultation with the local community and iwi.**

**Contributing people and organisations include:**

Di Lucas, Annabel Riley & Nikki Gray ( Lucas Associates )  
Rob Blakely & Chris Todd ( Wai-Ora Trust )  
Paul Mosely ( hydrologist )  
Andrew Crossland (ornithologist)  
Ian Lynn ( geomorphologist, Landcare Research )  
John Archer & Matthew Lester ( Earthwork )

**Financial support is gratefully acknowledged from  
Community Employment Grant (CEG), Waimakariri District Council and  
Canterbury Regional Council**

**December 1998**

© This work is copyright. Copying by the community, in a form retaining the integrity of the work, acknowledging the source, and, on a non-profit basis, is welcomed. No other use of this work is permitted without the prior consent of Lucas Associates.

## Contents

### Introduction

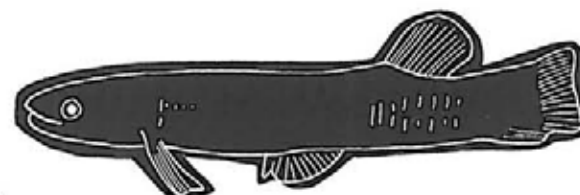
- 3. The Place
- 3. Background
- 3. Process
- 4. Key Recommendations

### Base Maps

- 6. Coastal Lands -  
land / water patterns
- 8. Aerial Photograph
- 10. Land Tenure

### Community - Workshop Comments

- 11. Values
- 15. Issues / Threats
- 18. Opportunities / Visions
- 22. Workshop Participants



### The Nature of the Place

- 24. Culture / Heritage
- 27. Hydrology
- 28. Wildlife
- 31. Existing Vegetation
- 33. Underlying Ecosystems -  
map & sections

### Restoration Guide

- 37. Restoration Guidelines
- 44. Ecosystem Plant Lists
- 51. Weeds & Invasive Plants

### Settlement Guidelines

- 52. Existing Character
- 53. Design Guidelines

### 54. Recommendations

### 57. References



Location Map



# The Coastal Lands of Waimakariri - Rakahuri (Ashley)

## Introduction

### The Place

These coastal lands lie beyond the highway, between the braided rivers of Waimakariri - Rakahuri (Ashley) and located within the Waimakariri District. Upon these lands lie the coastal settlements of Waikuku Beach, Woodend Beach and Pines Beach/Kairaki. Each settlement hugs the coastline of Pegasus Bay and are closely associated with the rural/naturalistic character of the coastal dune system. This is reflected in the daily lives of residents, who value the open spaces and variety of recreational opportunities the coastal rural context offers.

### Background and Objectives

Lucas Associates has been contracted by Wai-Ora Trust (a non-profit community organisation) to look at the potential of the Waimakariri - Rakahuri (Ashley) Coastal Lands for ecological restoration. The project is to explore and document options for these coastal lands and we are undertaking this through community consultation and professional analysis.

A further objective of Wai-Ora Trust is to identify potential employment and training opportunities for the community which may arise from any future ecological restoration.

### The Process

Three community workshops were held, in Woodend Beach Waikuku Beach, and Pines Beach/Kairaki, on the 10, 11 and 12 of August respectively. A poster and flier were earlier drawn up and distributed around the area, to interest groups and posted in shop/garage windows. Tuahuriri Runanga and Te Runanga O Ngai Tahu were invited to participate in the process. The workshops were also publicised in the Northern Outlook newspaper.

At the workshops groups were formed with local residents. The groups were then asked to identify values, issues, opportunities and visions of the area. Attendance was considered excellent from the local community and Runanga, with 29 people attending the Woodend Beach workshop, 43 at Waikuku Beach and 31 at Pines Beach.

This report has been compiled from the outcomes of the three workshops and subsequent analysis. In October the report was made available as a draft, for Runanga and community feedback, prior to being finalised and made available as a resource document

discuss with representatives

poster/flier, workshops

compiled base data

analysis, development, draft report

further consultation

final draft



## Key Recommendations

---

Recognising the importance of the area, the community consultation process and professional analysis suggest a vision for the Waimakariri - Rakahuri (Ashley) coastal lands that involves voluntary participation of landholders in:

- Retention of open space character;
- Conservation of local heritage;
- Restoration of natural areas and linkages to form a matrix within which various forms of production occur; along with,
- Retention and confinement of the low key beach settlements.

### FOR LOCAL PEOPLE, GROUPS AND AUTHORITIES TO PROGRESS THE VISION:

#### ASSIST LANDOWNER PROTECTION

1. Identify indigenous remnant vegetation for landowners if protection management is sought.
2. Develop mechanisms to provide protection guidance and assistance to landowners if wanted.

#### WILDLIFE

3. Explore the potential to have wildlife surveys undertaken, particularly in association with local schools and community groups.
4. Community and landowner interests explore different management regimes for conservation and restoration.
5. Develop strategies and guidelines for wildlife enhancement.

#### WATER MANAGEMENT

6. Encourage understanding of groundwater levels and the ecological potential of the land-water interface.
7. Have guidelines developed for restoration and management of streams and wetlands.

8. Encourage and assist landowner/managers to exclude grazing stock from waterways and wetlands
9. Where there is space, encourage restoration of natural stream form and vegetation - rather than straight steep-sided, "shaved" drains.
10. Explore the potential for land-owner support to seek to re-instate stream flows crucial to wetland sustainability.
11. Explore the potential for expanding the area of wetlands - and encouraging their native biodiversity.

#### RESTORATION PROJECTS

12. Learn from existing restoration projects and identify potential restoration trial sites and demonstration plots in each type of ecosystem. Trial different establishment and management techniques.
13. Ensure recognition that wetland ecosystems extend well beyond the actual water or visibly wet area, so that appropriate management is sought.
14. Explore potential support for restoration projects.
15. Have restoration guideline details developed for each type of ecosystem to cover both large- and small -scale projects.
16. Encourage establishment, support and advice for Coastal Care Groups.
17. Along with trials and demonstrations, further develop the planting guides to enable people to undertake their own restoration activities.
18. Support and encourage neighbourliness, through complementing restoration efforts.

#### BIODIVERSITY MONITORING

19. Seek to establish indigenous biodiversity monitoring programmes in the community to identify and record the change that occurs.

### WEEDS & WASTE

20. With the community, develop a database of existing and potential invasive plants (weeds) and develop a weed management strategy.
21. Encourage good practice in disposal of garden waste.
22. Encourage avoidance and removal of polluting practices.
23. Recognise cultural and heritage values in the selection, upgrading, management and monitoring of sewage treatment techniques.
24. Encourage the upgrade of community and individual sewage management schemes to avoid contamination and the degradation of natural and cultural values.

### EMPLOYMENT & TRAINING

25. Develop a co-ordinated approach to employment on restoration programmes.

### INTERPRETATION

26. Develop and provide appropriate interpretation of cultural history and of natural history.
27. Encourage discussions with tangata whenua prior to any new earth disturbance, to seek to avoid disturbance of cultural values

### ENVIRONMENTAL RESULTS

#### ANTICIPATED:

Community feeling empowered, responsible and able to manage their amenity, heritage and environment sustainably.

### RECREATION

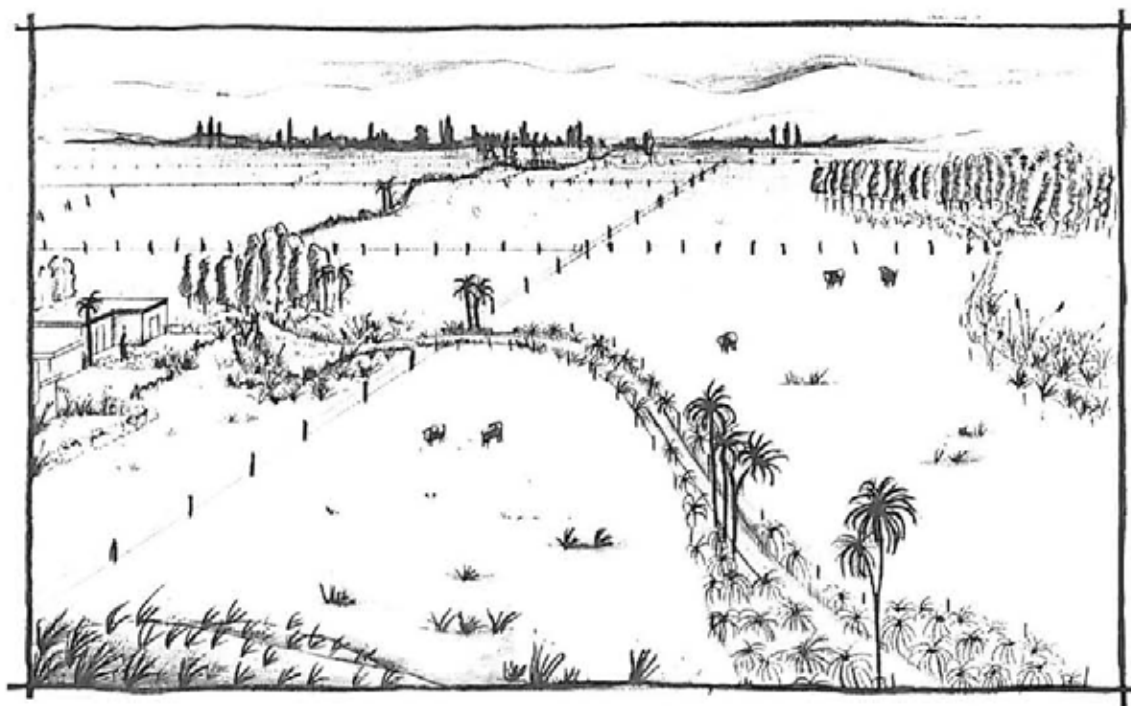
28. Seek development of a walkway system and other ecologically, socially and culturally appropriate recreation opportunities.
29. Develop mechanisms for reducing user conflicts e.g. separate areas, restoration timing, etc.

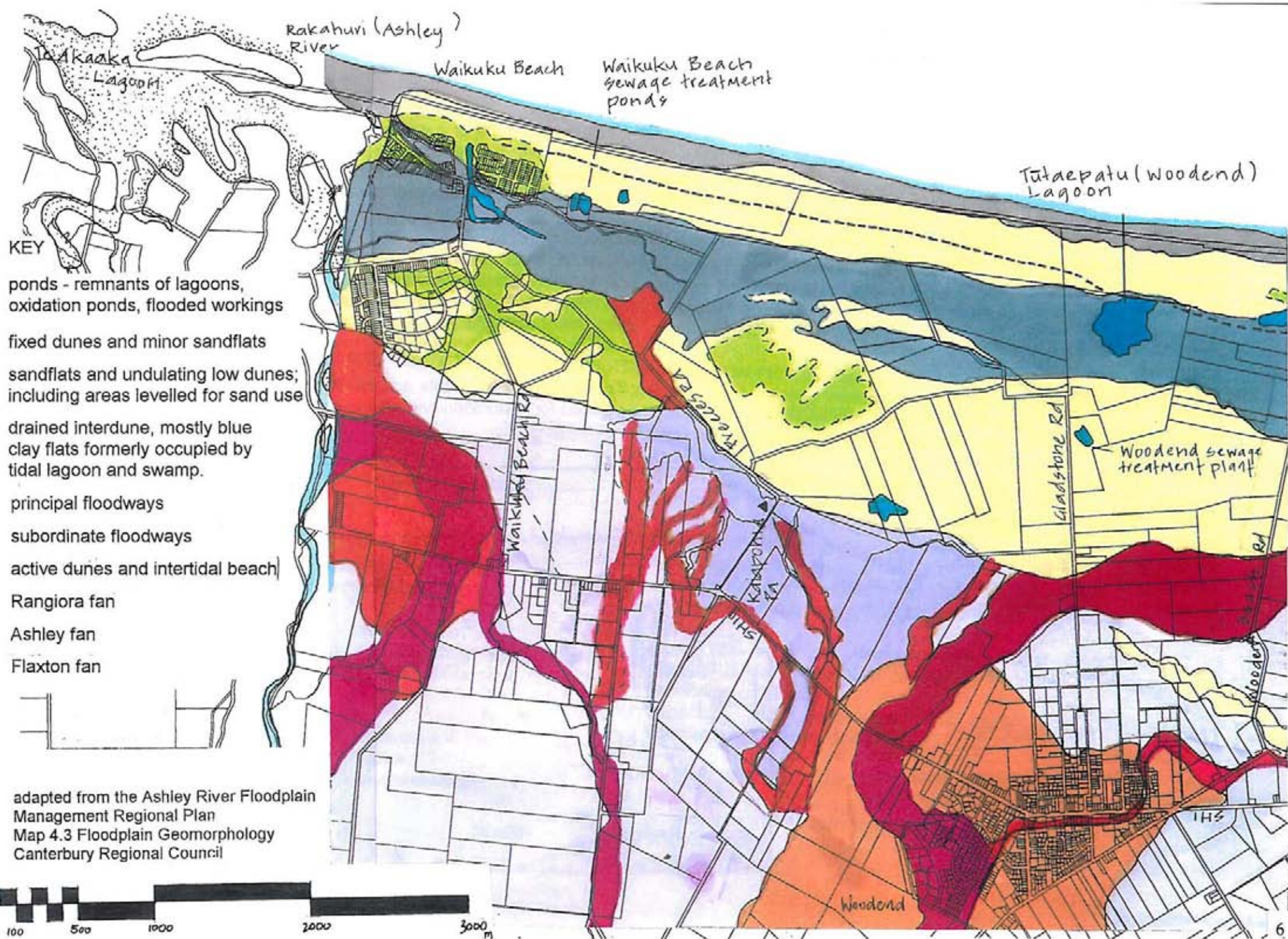
### BUILDINGS

30. Have a local landscape guideline brochure developed in consultation with the community.
31. Develop a building guideline leaflet to articulate both rural and settlement character.

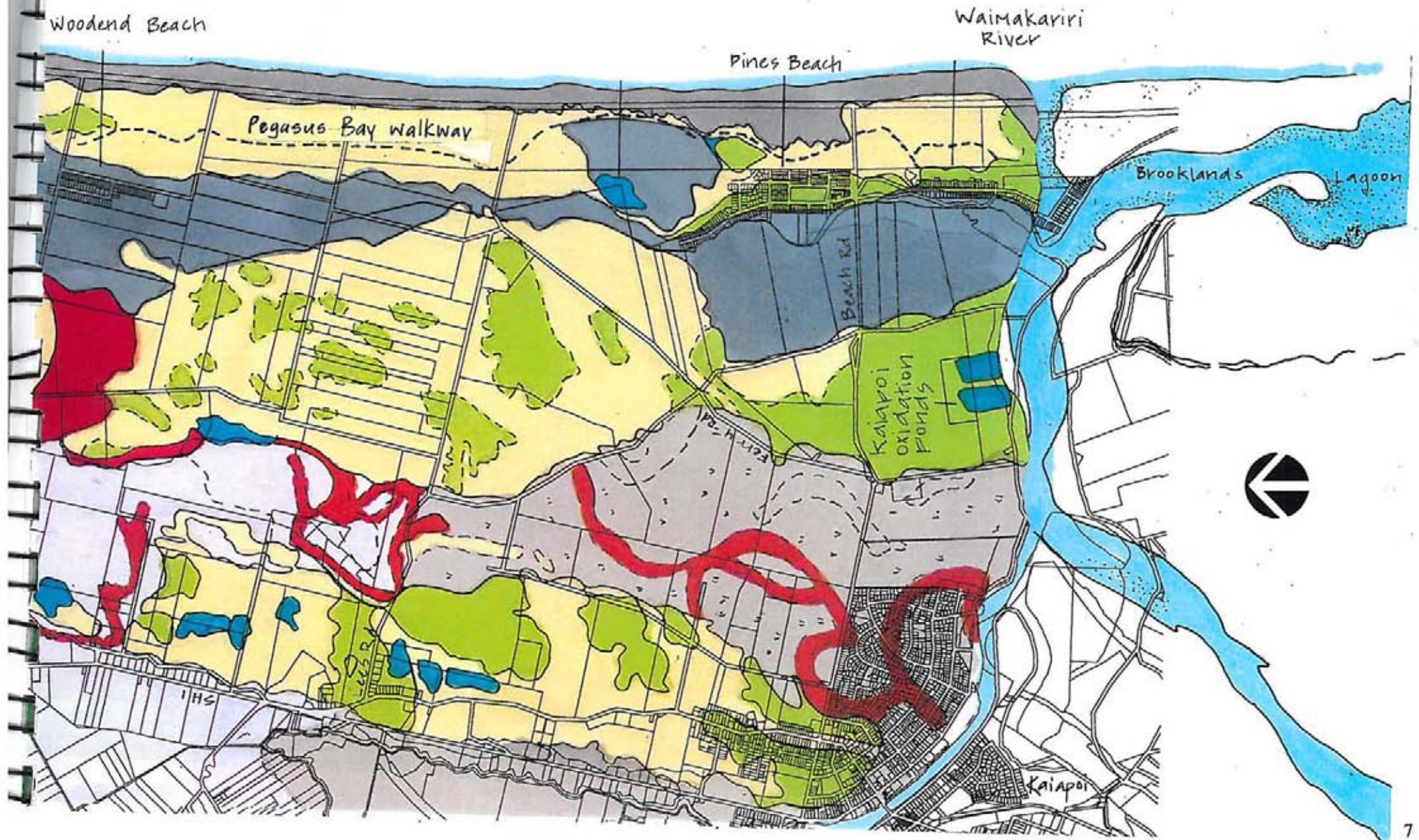
### DISTRICT PLAN

32. To recognise and enable achievement of the recommendations outlined for restoration and settlement.





# Coastal Lands - land / water patterns



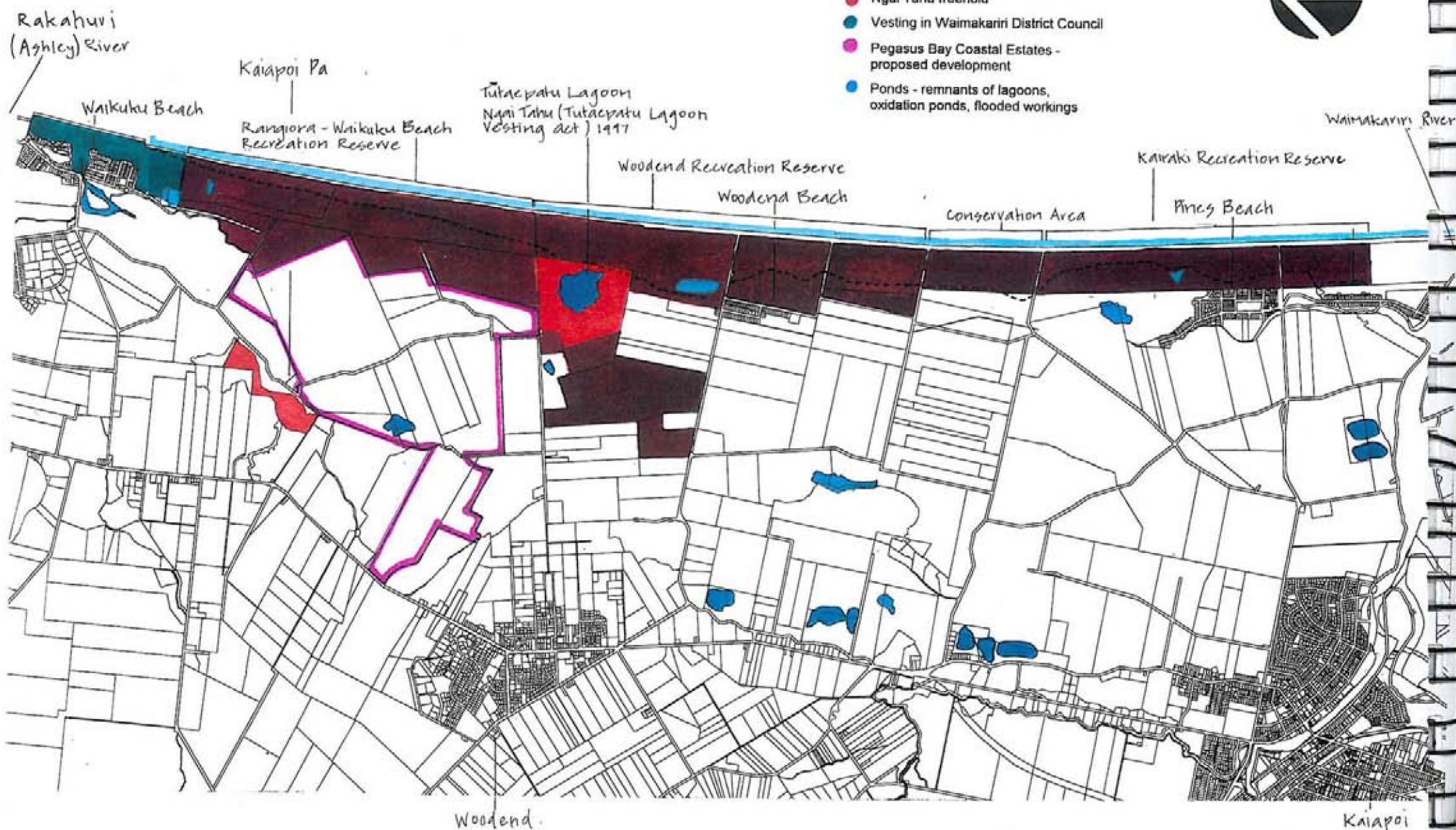




Aerial Photograph 9

# KEY

- Reserve land vested into a trust -  
Ngai Tahu and Waimakariri  
District Council - Te Kohaka
- Ngai Tahu freehold
- Vesting in Waimakariri District Council
- Pegasus Bay Coastal Estates -  
proposed development
- Ponds - remnants of lagoons,  
oxidation ponds, flooded workings



Woodend

Kaiapoi



## Land Tenure

## Community - Workshop Comments

### Values of these Coastal Lands Identified by the Community were:

#### Natural Character

- "wilderness", remoteness, untouched wild landscape and rural character
- "natural / rural/ undeveloped"
- continuous natural belt from river to river
- sheltered quality especially Woodend to Pines Lagoon

#### Wetland

- Importance of Tūtaepatu lagoon
- Kairaki lagoon - "which people still remember as a flax swamp"
- mouth of Ashley lagoon ( more like the West Coast )



• Ashley river / lagoon

- wildlife and native vegetation
- existing system for stability and character
- "Winters farm on Beach Road where it backs on to Pines and Kairaki is valued as a wetland"

#### Vegetation

- native vegetation
- vegetation (exotic and native) wildness
- introduced species of interest e.g. silver poplar - Pines Beach
- present vegetation cover i.e. pines, have a stabilising character
- pines give protection from the wind - Pines Beach
- pine forest is valued for gathering firewood and pine cones - Waikuku Beach
- "any forest is better than no forest" - Waikuku Beach
- forest - controls erosion

#### Bird life / Wildlife

- bird life e.g. at Taranaki Stream Ashley Lagoon - robins, fantails, herons (grey, white faced and white), bittern, marsh crake, shining cuckoo, Oriental cuckoo, bellbirds( have come back in the last 6 years), native pigeons, black fantail, brown creeper (recorded), morepork
- potential for wading birds - in Pines Beach village
- increase in breeding birds, migrating birds

#### Clean Environment

- value clean water in the Waimakariri river
- clean air / no smog

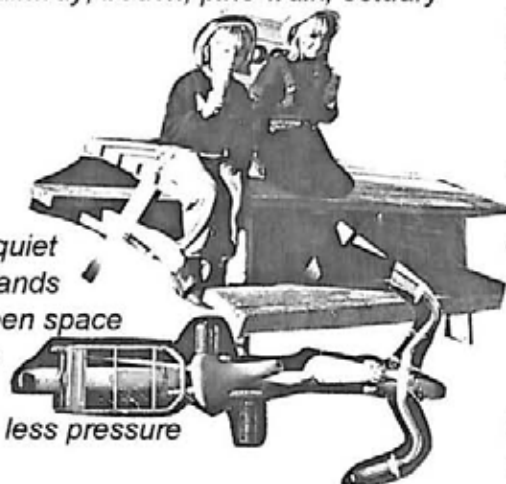
## values continued:

### Experience

- "here to escape the city - suburbia"
- variety of experience - lagoon, walkway, beach, pine walk, estuary
- country village atmosphere
- views into and out of lagoon
- rural character and atmosphere
- unspoiled environment
- freedom and isolation
- remoteness and distance
- tranquillity, peaceful, restful and quiet
- space in association with urban lands
- privacy, un-crowded, solitude, open space
- safe area for kids with little traffic
- sea noise adds character
- "lifestyle away from the rat race", less pressure
- coastal way of life
- place to be alone, without noise from motor bikes and 4WD
- unique and special environment
- baches - "We value the unspoiled environment and do not want the 'beach resort' style or to be suburbanised."
- the town should be maintained as a quiet family holiday place
- wish to retain the identity we have
- wilderness on our backdoor
- low value land
- restrictive development is an asset e.g. housing

### Community

- small community
- neighbourliness, caring community spirit
- great for young families
- people are friendly and look out for one another
- unchanging for 50 years



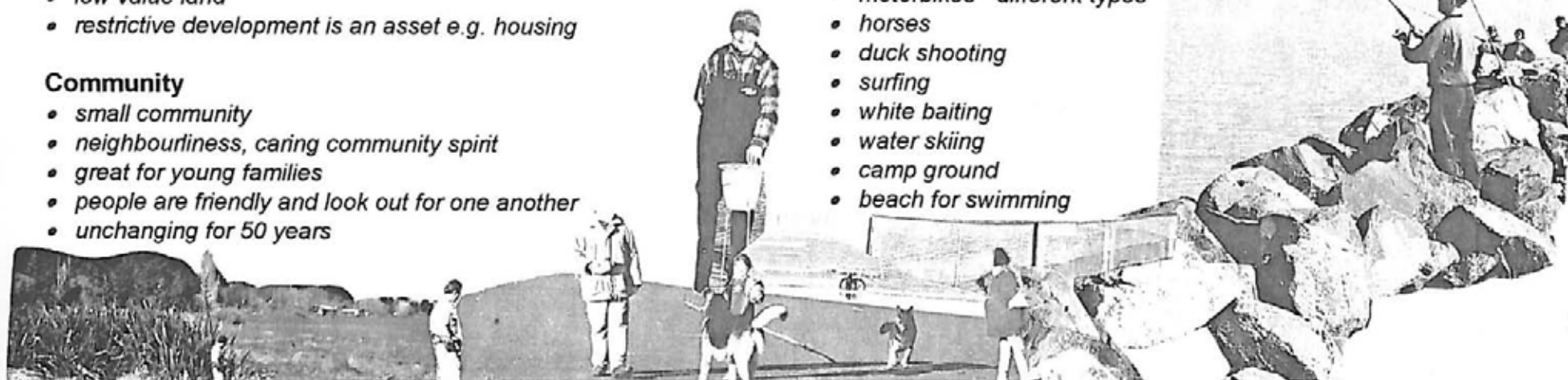
- "we enjoy the way our community interacts in our daily lives" e.g. shop, hall playground and school - Waikuku Beach
- "leave it as it is"
- good for kids - opportunities to play in forest, build huts

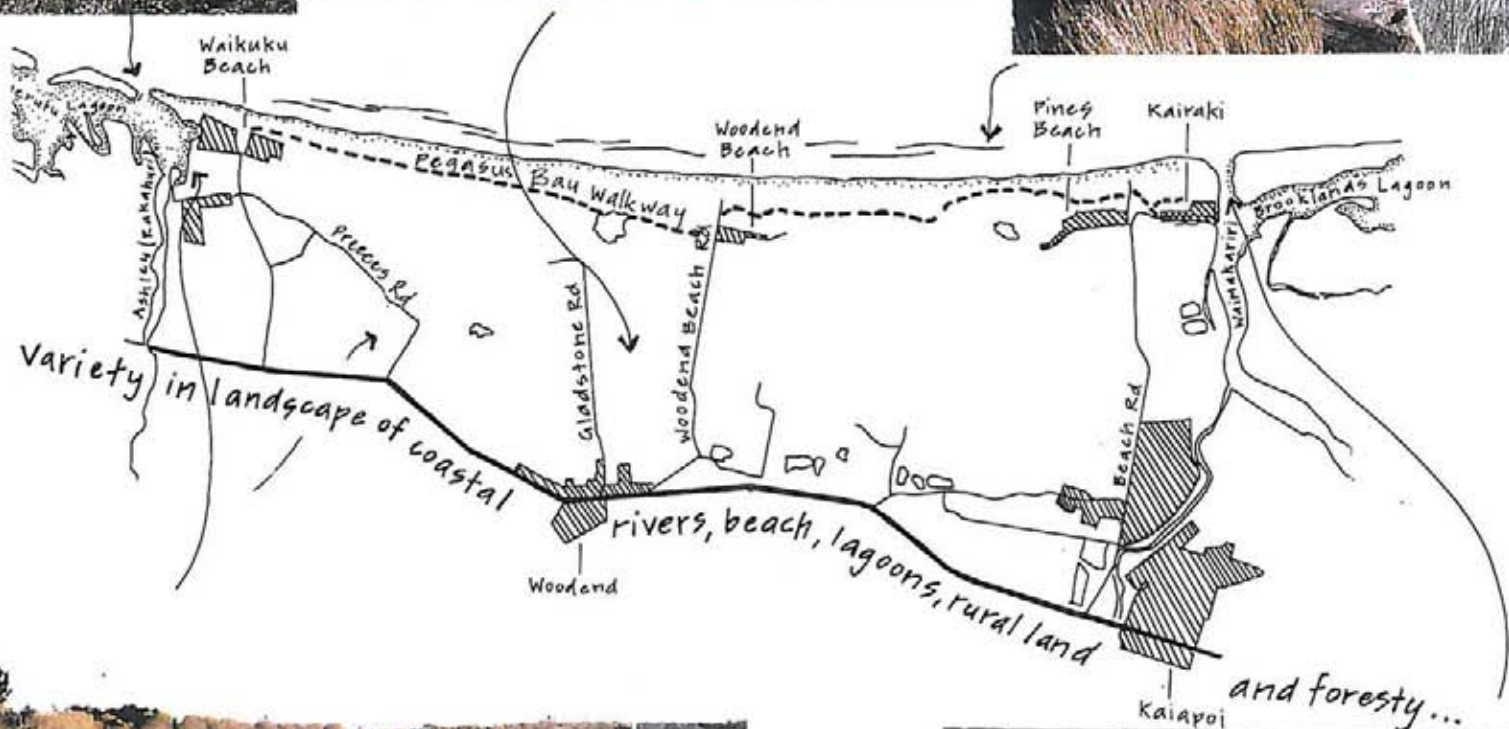
### Facilities

- town shop - Pines Beach (Woodend and Waikuku Beach settlements also have shops. At Waikuku Beach it provides a community focus)
- fire brigade, watch dog group, youth group, play centre, camping ground, surf club, bowls, rest home
- "School is an asset to the community. The school as it operates is absolutely vital to Waikuku. Generations have fought to retain the school and it is integral to the settlement". (The Waikuku school links the farm and beach communities).

### Recreation

- simple, accessible, easy and numerous choices for recreation
- opportunities for unstructured / passive outdoor recreation
- variety of walks - walkway, beach, sand hills, forest, wetland
- collecting firewood
- planting trees
- beach combing
- running
- fishing
- motorbikes - different types
- horses
- duck shooting
- surfing
- white baiting
- water skiing
- camp ground
- beach for swimming





## values continued:

### Cultural

- the existence of Kaiapoi Pa site and pre European history in the area is of importance to New Zealand society in the future.
- Tangata whenua - waahi tapu, historic, artifacts, culture and spiritual
- preserving the Mauri (spirit of the area)
- mahinga kai
- respect for race and history
- the area proposed for Pegasus Development is of national importance for the pounamu working sites which predate Ngai Tahu by 300 years and Pounamu workshops (of Ngai Tuahuriri). It also connects Tutaepatu with Kaiapoi Pa site.



### Heritage

- Maori/European heritage
- historical and archaeological values of our existing wetlands need to be fiercely protected

### Education

- opportunity to learn about nature
- interaction between birds, insects e.g. Sand Scarata which move over the sand at night
- opportunity to learn about natural history/ecology e.g. people can see herrings feeding at floodgates
- opportunity to learn about different cultural/management of land (ecosystems)

### Access

- easy access for people to enjoy the coast
- handy to the city but far enough away
- "public access is valued but not if it brings in too many vehicles, do not want motorised access to the beach and dune system".

### Production

- farming - small scale horticulture, good market gardens inland, (dairy farming is the traditional form of farming).
- wetland and farmland integration e.g. seasonal inundation
- fishing viability (seasonal)
- good spring stock
- aquaculture

### Flooding

- sand dunes provide a barrier from tsunami
- dune/wetland system provides a barrier against migrating sand over farmland
- track along beach is important for fire control
- regenerating coastal dunes

## Issues / Threats to these Coastal Lands Identified by the Community were:

### Wetlands

- *native planting needs to be ecologically sourced*
- *loss of wetland will have effects on wildlife*
- *need native vegetation to attract a variety of birds and animals*
- *drainage*
- *subdivision/development threat to wetland*
- *ecology is significant*
- *subdivision will bring a change to hydrology, flooding*
- *need to enhance areas of wetlands to discourage vandalism*
- *difficulty of establishing native vegetation*
- *need to increase habitats for wildlife*
- *objects hindering water flow causing stagnation*
- *area behind houses on Featherstone Avenue to be cleaned up by Saltwater Creek. - Pines Beach*
- *land inland of the dunes looks a "shambles"*
- *preservation and protection of rare indigenous plants*
- *rare flaxes along Saltwater Creek (Kairaki) need saving*

### Sand Dunes

- *preservation and protection of sand dunes*
- *sand dunes keep out Easterly wind*

### Heritage

- *too much interest in special sites may lead to vandalism*
- *lack of interpretation at some heritage sites*

### Education

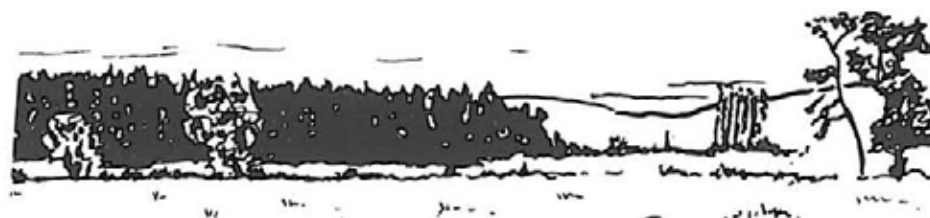
- *important to educate people on the environment*

### Walking Tracks

- *improve existing walking tracks which are unable to be used at times*

### Forestry

- *logging / general maintenance*
- *mixed reaction to pine trees - stabilising factor to the beach, but suppressing other species. How do they fit into the environment?*



### Management Plan

- *restoration needs a strong vision and policies*
- *need to prioritise*
- *a management plan should look at the whole area*
- *need a balance between access and conservation*
- *lack of confidence in District Council's agenda and of people's ability to have their wishes taken seriously*

### Funding /Expertise

- *need considerable financial support for a major restoration project*
- *needs planning for 25-30 years with ongoing support and finances*
- *need qualified people for the job*
- *any restoration needs to be carried through with*
- *avoid commercialisation of area to fund restoration*

## issues / threats continued:

### Development

- further large scale development will put pressure on natural resources i.e. water, loss of natural environment and infrastructure i.e. sewage
- it will pollute the environment, change and alter the waterways threatening existing productive land.
- loss of rural land
- District Plan needs to retain limits on development / subdivision
- development must respect existing community aspirations
- Pegasus Bay development - What is the future of the land - a town, a subdivision or rural land ?
- development will affect historic European and Maori sites
- future development will affect the water quality
- future development will cause urban sprawl
- leave it as it is - no development of roading or houses
- any interference with Te Kohaka Trust Reserve is to be resisted
- a few believe that development is not a threat
- Kaiapoi and Woodend are creeping out, we don't want them to come too far

### Population Increase

- population growth could destroy the values that people live there for
- increase in traffic volumes, litter, vandalism and over population of the region - pressure on the environment, people, vehicles and animals

### User Conflicts

- incompatibility of recreational users of tracks e.g. horses, motorbikes, cars, walkers
- need to separate horses/motorbikes and walkers
- horse trainers on the beach



- horses riding through picnic area on Ferry Road, Woodend Beach
- interest groups need designated areas e.g. for horses, greyhounds
- conflict between boaties and fishermen on rivers

### Motorbikes

- motorbikes dangerous to children and horses
- recreational users of motorbikes play on the beach, sand dunes and walkway affecting plant life, wildlife and people.

### Vehicle Access/Speeding

- no control on access to beach areas from Pines Beach/Kairaki.
- further access to beach and environments will allow more 4WD / bikes to degrade dunes and vegetation. There needs to be restricted access
- need to control vehicle access to beach and rivers to counter effects such as vandalism
- army vehicles have been tearing up the sand dunes
- speeding cars on Beach Road - Woodend Beach
- limited speed zone by Christian Camp dangerous, 30 km signs to be further westward - Woodend Beach

### Flooding

- threat of tsunami
- would the wetland be effective in reducing flooding?
- existing properties have unknown threat of flooding
- effect on subdivision/development
- flooding from the Waimakariri river
- drainage /flood control
- sea level change should be brought into the calculations

### Drainage

- needs to be maintained, on other hand, irrigation may be needed



## Issues / threats continued:

### Fire

- no provision for fighting fires except from Woodend Beach township, ( Waikuku Beach has a small voluntary fire brigade)
- need for breaks between pine trees, avoid more pine trees
- much of the coast is not accessible for fire trucks or 4WD, there needs to be constant maintenance

### Pests

- damage to plants from rabbits, (wild cats, hares and possums also a problem)
- ferrets, rabbits, possums and rubbish dumped will increase the problem of TB

### Weeds

- weeds/invasive plants e.g. blackberry, pussy willow, wilding pines, nightshade
- weeds are a maintenance problem for new planting

### Erosion

- sand dune coastal erosion - coast open to flooding, dunes need to be maintained
- boats/jet skis causing erosion to the Waimakariri river shoreline

### Pollution

- control issues - toxins, stock carcass's lying around
- poisoning of ground water
- noise pollution e.g. from water sports and vehicles causing distress to wildlife
- air quality - increase of houses will effect the air quality

### By-laws

- lack of enforcement of by-laws

## Production

- how will wetland restoration affect farming land along the edge?
- how would an employment park affect the area?
- drainage/irrigation on the farm
- potential for commercial eel farms



## Sewage System

- Kaiapoi sewage system is becoming overtaxed, with potential to threaten clean waterways
- water contamination from sewage, cattle farming, industry
- sewage is a problem which will get bigger with increased built development
- Woodend and Waikuku sewage ponds both overflow into wetlands areas - the council to look at a solution
- suggestion to move sewage to Bromley instead of using the small inefficient plants - expected to be expensive
- sewage is damaging the wildlife and the sand dunes/mahinga kai - health problem
- don't want any more oxidation ponds

## Opportunities / Visions of the Coastal Lands Identified by the Community were:

### Restoration of Wetlands and Associated Ecosystems

- to enhance and restore different ecosystems - existing lagoons, wetlands, vegetation, birdlife and other wildlife
- remnant stumps of Totara, Kahikatea, Kanuka forests have been found and are a cue to restoration options



- some Ngai Tahu would like to restore the whole coast to native habitat
- maintain and optimise corridors for the birds from the mountains down the rivers, over the wetlands, sand dunes and out to sea.
- potential enhancement of fish habitat and breeding grounds
- a sanctuary for birds and other wildlife - insects and frogs - especially around the lagoon
- endangered plants and fish saved e.g. eels
- a managed ecosystem with a sustainable harvesting strategy - fish, ducks, trees
- restoration of native flora and fauna but in pocket areas only
- wetland /lagoon area increased - maybe to replace some of the pines - could plant fast growing natives
- lagoon cleaned up and wilding pines and gorse removed
- "like to see pockets of open water and emergent bush with open water plus bush corridors and connecting walkways"



- the natural character of the coastal dunes maintained
- insectivorous birds, including fantails helping keep insects in balance
- restoration of wetlands balanced with other uses
- council purchase and enhance wetland west of Park Terrace - Waikuku Beach
- Pines Beach wetland opened up - salt marsh vegetation/tidal environment recreated

### Vegetation

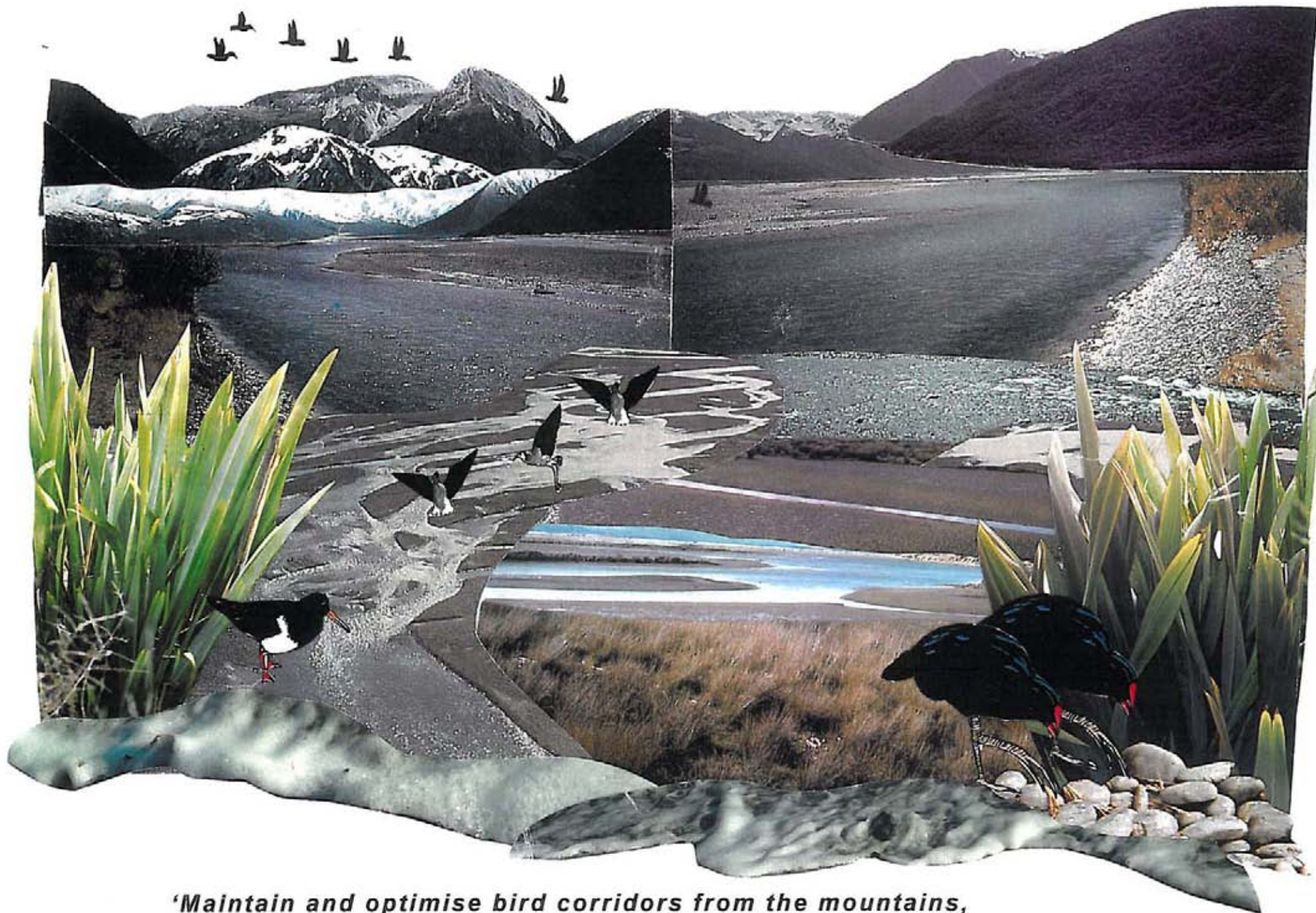
- introduction of more native plants and trees
- establish native plants throughout pine forest to create suitable environment for native fauna to flourish - initially in managed pockets
- pine forests continuing as an important part of the environment for dune protection, wind protection and firewood.
- an area of native vegetation e.g. trees, flax, sedges
- re-establish vegetation which provides food for birds
- a coastal strip afforested with natives : providing natural variety rather than an artificial monoculture

### Conservation / Birdlife

- people sees the land as a living environment - it has a personality
- potential for wading birds - in the village
- increase in breeding birds, migrating birds

### Experience

- sanctuary, a place to retreat to
- would like it to stay the same
- an unspoiled environment with a sense of solitude



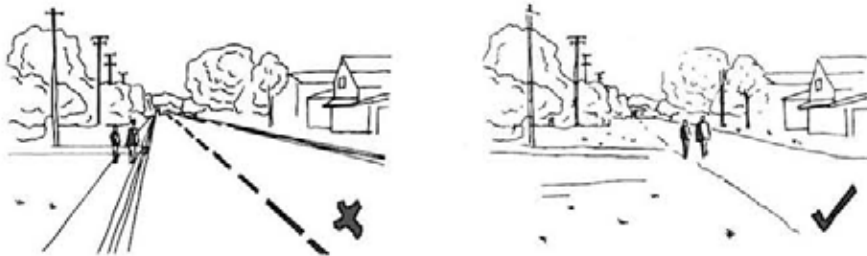
***'Maintain and optimise bird corridors from the mountains,  
down the rivers, over the wetlands, sand dunes and out to sea.'***

## opportunities / visions continued:

- size of community remains relatively unchanged - leave it rural
- local residents feel a sense that this is their place - beach / forest
- want it to remain unsophisticated - no beach resorts
- provide an environment which is safe and fun for kids to grow up
- free from vehicles and noise

### Settlements

- retention of village atmosphere, retain soft landscape, country environment while having practical necessities i.e. drainage
- maintained and managed area providing services such as footpaths, but in a way which retains the haphazard and unplanned feel



- vision for future generations - leaving these valuable, vulnerable coastal lands protected in perpetuity - keep the same environment but still encourage new residents and some progress keep small community feel - friendly
- retain village commons - Pines Beach and Waikuku Beach

### Development

- appropriate/controlled development that respects the environment
- an area that is kept as it is, free from the threat of development - whilst some development is okay, none is preferred



- no commercial or residential development backing onto dunes
- limited residential growth - no new town
- leave it rural
- retain "green belt" of undeveloped land around Waikuku Beach

### Recreation

- a managed designated area for offroad vehicles, horses and greyhounds
- area for teenagers e.g. bikes, skateboards and basketball
- re-establish, improve the Pegasus Bay walkway
- establish an inter-linked network of walkways
- hides for bird watching
- historic trail
- pines retained around the playground / wilding pines gone
- Pines Beach motor camp a source of revenue and not perceived as a disturbance

### Access

- managed and continued access to beaches all along the coastal strip
- opportunities for people of all ages, special needs, city visitors and children to access the coast
- restrict access to the beach for motorbikes - require permits or restricted access to pine forest

### Cultural

- integrated management based on partnership between cultures
- preserving resources and environment especially in forms of mahinga kai, special flora and fauna species, and, archaeological interests

### Identity

- "If the three settlements are viewed as one entity then the individual communities may lose their identity and what we want to do with the area".- Pines Beach

## opportunities / visions continued:

- *living with a sustainable use of our land*



### Education

- *information provided for locals on the environment and heritage through interpretation*
- *more education and public awareness of what is there in order to support enhancement of the area i.e. a place for people to come and relax, learn, appreciate and protect.*
- *public awareness of the wetlands for people who want to appreciate them, not damage them*

### Employment

- *opportunity for conservation work, work schemes and training*

### Community Involvement

- *opportunity for community to get involved in the implementation of the restoration e.g. planting*

### Finances

- *financially sustainable restoration, not using rateable funds and done in stages*
- *restoration funded by governing body*

### Management

- *a comprehensive management plan that can work towards common goals*
- *expertise and commitment contributing to restoration*

### Ownership

- *secure ownership sought, of remaining wetland areas by Council, DOC ( Te Kohaka O Tuhaitara Trust does not hold any land but was formed to develop an integrated management plan and implement it).*

### Planning

- *covenants put on future development so that it doesn't dramatically change*
- *apply for some form of protective covenant to be placed on the coastal wetland system*
- *a heritage order*
- *a comprehensive plan that we can all work towards*

### Pests

- *the willow problem eliminated or well under control, grazing helps keep down woody species*
- *pests and weeds controlled*

### Production / Business

- *farming and wetland mix - seasonal inundation*
- *nature and culture tourism opportunities*
- *rural land of high production value needs to be protected*
- *a mixture of land uses suited to various different sites - forest, wetland, pasture - variety brings beauty*
- *long term - limited commercial development i.e. aqua culture -eels, production*
- *limited commercial opportunities to fund restoration projects - forestry, aquaculture and production*
- *co-ordinated forestry management plan so that recreation opportunities could be improved*
- *different types of production forest, of non invasive hardwoods*

### Flooding

- *flood management through appropriate land use, definition of flood zone and by ensuring rural residential suitability*
- *need to establish a buffer between wetland and rural land for flooding*
- *a fully integrated flood management plan developed*
- *permanent buffer zone, between the sea and the inter dune belt*

## Workshop Participants

### Woodend Beach

Name	Organisation
John Archer	<i>Earthworks/resident</i>
David Ayers	<i>Waimakariri District Council</i>
Rob Blakely	<i>Wai-Ora Trust</i>
Marjorie Cobson	
Jim Cobson	
Kathryn Fordmeyer	
Miles Giller	
Nikki Gray	<i>Lucas Associates</i>
David Gregory	<i>Canterbury Regional Council</i>
Beryl Holdorf	<i>Horse Treks</i>
Olwyn King	<i>Advisory Group Waimakariri District Council</i>
Matthew Lester	<i>Earthworks/resident</i>
Di Lucas	<i>Lucas Associates</i>
Paul Mosley	" "
Erina McNeil	
Grena McNeill	
Clem Parfitt	
Ken Poole	
Valerie Poole	
Annabel Riley	<i>Lucas Associates</i>
Judith Roper-Lindsay	<i>Boffa Miskell</i>
Dave Sanderson	
Margaret Sanderson	
Bruce Thompson	<i>Waimakariri District Council</i>
George Thurston	
Sherry Thurston	
Chris Todd	<i>Wai-Ora Trust</i>
Viv Smart	
Doug Wethey	

### Waikuku Beach

Name	Organisation
Nick Allen	
John Archer	<i>Earthworks/ resident</i>
Bruce Bastion	
Bruce Bastion	
Marty Bennetts	<i>Rural Fire Crew</i>
Rob Blakely`	<i>Wai-Ora Trust</i>
Paula Brydon	
PW Brydon	
Hoana Burgman	<i>Ngai Tuahuriri RSMK</i>
Gillian Giller	
Nikki Gray	<i>Lucas Associates</i>
Raewyn Growoott	
Gilly Hall	
Merv Hall	
Tony Hall	
Nigel Harris	
Ngawati Heremaia	
Murray Kane	
Jo Kane	<i>Surf Club</i>
	<i>Waikuku Residents Ratepayers Ass.</i>
Peter Keene	<i>Rural Fire Crew</i>
John Kneale	<i>Holiday Park</i>
Matthew Lester	<i>Earthworks/resident</i>
Di Lucas	<i>Lucas Associates</i>
Paul Mosley	" "
Joyce McIvor	<i>Waimakariri District Council</i>
Michelle Philpott	
Neill Price	
Annabel Riley	<i>Lucas Associates</i>
Janine Riley	

Tony Robb	<i>Rural Fire Crew</i>
Jonathan Scott	
RJ Smith	
Gordon Stewart	
Brian Stoles	
Clayton Thomas	
Chris Todd	<i>Wai-Ora Trust</i>
Geoff Whale	
Isobelle Wilkins	
Claire Williams	<i>Ngai Tuahuriri Resource Committee</i>
Steve Wilson	<i>WEURFF</i>
Tracey Wilson	"
Peter ?	

## Pines Beach

Name	Organisation
John Archer	<i>Earthworks/resident</i>
John Billington	
Graeme Brixton	
Scott Butcher	
John Cooke	
Aroha Rewiti Crofts	<i>Pines/Kairaki Beach Association</i>
Janice Crossett	
Peter Davis	
Fred Evans	
Nikki Gray	<i>Lucas Associates</i>
Ursula Hack	
Glenys Hall	<i>Pines/Kairaki Beach Association</i>
Sharon Hancox	<i>Pines/Kairaki Beach Association</i>
Anna Harris	<i>Pines/Kairaki Beach Association</i>
Ian Hewson	
Keith Hodgson	
Joy Hodgson	<i>Pines/Kairaki Beach Association</i>
Ann Holder	

Wirenui Hopkinson	
Tokomasu Howard	
Di Lucas	<i>Lucas Associates</i>
D Lundy	<i>Waimakariri District Council</i>
Darryl Mallock	
Paul Mosley	<i>Lucas Associates</i>
Colin Page	
Robert Poole	
Annabel Riley	<i>Lucas Associates</i>
Barry Shearsby	
Chris Todd	<i>Wai-Ora Trust</i>
Reeve	

**These Coastal Lands**  
beyond the highway,  
between the Ashley and Waimakariri Rivers  
A Series of Community Workshops  
as a contribution to planning processes

What are the values of these coastal lands?  
- natural values?  
- heritage values?  
- cultural values?  
- production values?

What are the development and restoration opportunities?

What do you think is an appropriate future for these lands?  
- come and have your say.

**Dates and Venues**  
Monday 10<sup>th</sup> August Woodend Beach Hall  
Tuesday 11<sup>th</sup> August Waiuku Beach Hall  
Wednesday 12<sup>th</sup> August Pines Beach Hall

**Time**  
7:00 - 9:30 pm

**Contacts**  
Di Lucas, Lucas Associates (03) 365 0789  
Tony & Gay Hall, Waiuku 313 5498  
Jo Kane, Waiuku 312 7863  
John Archer, Matthew Lewis, Earthworks 313 4263  
Ria Tait, Tuahuriri Runanga (03) 313 8525  
Aroha Crofts 313 5543  
Linda Conville, Te Runanga O Ngai Tahu 313 2655

Anyone with an interest in this area is invited

## **Taonga Tuku Iho**

### **The Nature of the Place**

---

From the opportunities and visions identified in the workshops, conservation and restoration of heritage values was understood to be important. The report therefore explores further the nature of this place to provide information, and then guidance for conservation and restoration management for land owners etc, who may be interested.

#### **Heritage / Culture**

Heritage and cultural values have been signified as of major importance in the coastal lands of Waimakariri - Rakahuri. This has been demonstrated through the workshop consultation process undertaken for this project, as well as in the resource documentation - for example, Te Whakatau Kaupapa, submissions and evidence regarding Pegasus Bay Coastal Estates Ltd., and, the knowledge of those involved in contributing to report development.

The coastal wetlands of the Waimakariri - Rakahuri have long been important to tangata whenua. These lands are in the rohe of Ngai Tahu and the takiwa of Ngai Tuahuriri and others before them for hundreds of years. The area has a long lived-in history so that there are important patterns, sites and resources that tell of these times - mahinga kai, pa, urupa and other waahi tapu cue to these values. There are also layers of tragedy and sadness.

The area also remains important today and for the future as a lived-in or cared for place for tangata whenua. It is therefore important the coastal lands are not viewed as merely historic heritage, but are recognised as living heritage, and as living culture. Conservation of heritage values and restoration of cultural values, integrated with appropriate production and living, are therefore considered appropriate.

Articulation of specific values may be more appropriately undertaken by tangata whenua. This report seeks planning, processes and information sharing to ensure the values are not threatened, but respected and conserved.

Because of the intensive lived-in history of this place, the sacredness of many sites and the need to respect the values, any earth disturbance proposed would preferably be discussed with tangata whenua.

#### **Tetahi Korero Tuku Iho Kia Matou O Ngai Tuahuriri**

##### **Guidelines for Ngai Tuahuriri**

---

Extracts as adopted by Te Runanga o Ngai Tuahuriri meeting of the 1 November 1998.

##### **Kaupapa Tikanga**

"Hei manaaki hei tiaki hei whakamana te mana motuhake te tino rangitiratanga o nga whanau ki o ratau taonga tuku iho na nga tupuna".

##### **Guiding Principle**

To empower our people with dignity to protect their independence and ownership of their heritage left to them by their ancestors.

##### **Kaupapa Tikanga**

Tino rangitiratanga is the right of all persons to own his/her independence and heritage in a responsible manner