

Marokapara



2000

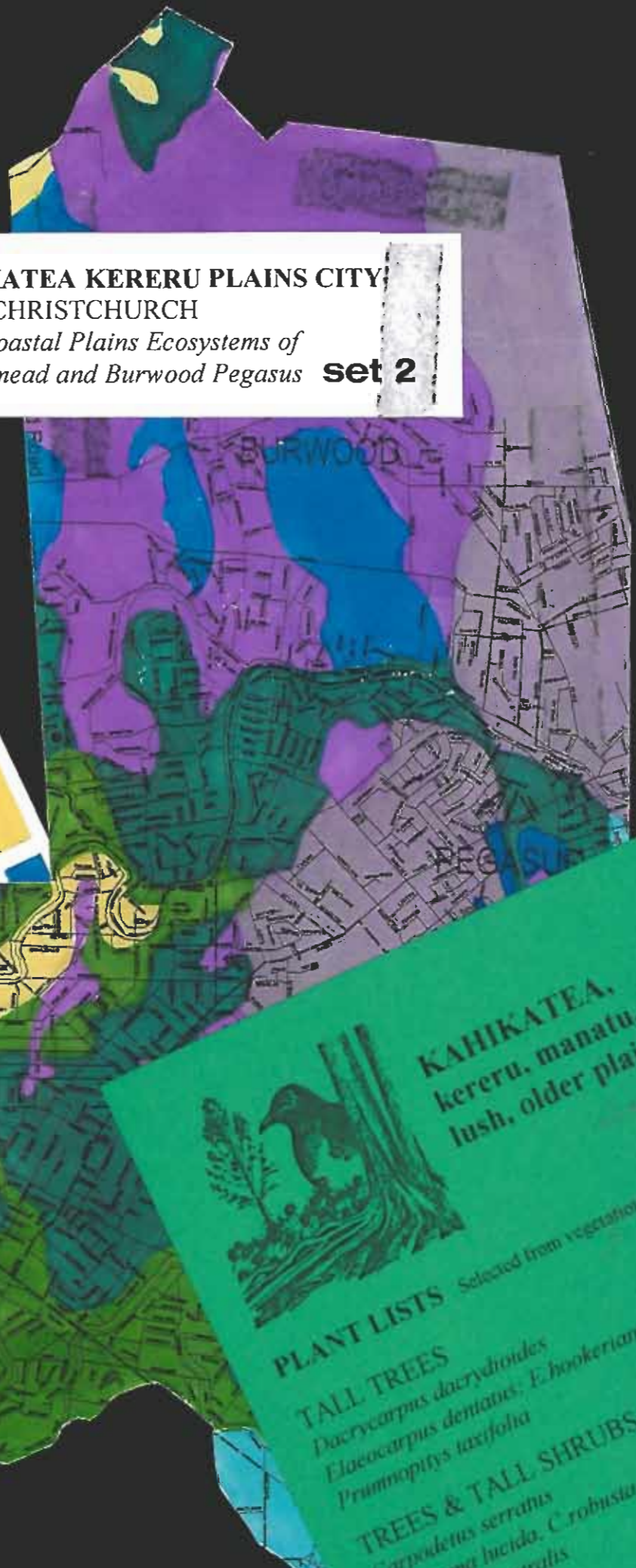
**THE KAHIKATEA KERERU PLAINS CITY
OTAUTAHI CHRISTCHURCH**

*Indigenous Coastal Plains Ecosystems of
Hagley Ferrymead and Burwood Pegasus* **set 2**

KAHIKATEA
kereru, manatu,
lush older plains ecosystem

TOTARA
bellbird, matai, broadleaf,
older plains ecosystem

HOUHERE
piwakawaka, kobuhu,
mid-age plains ecosystem



KAHIKATEA,
kereru, manatu,
lush, older plain

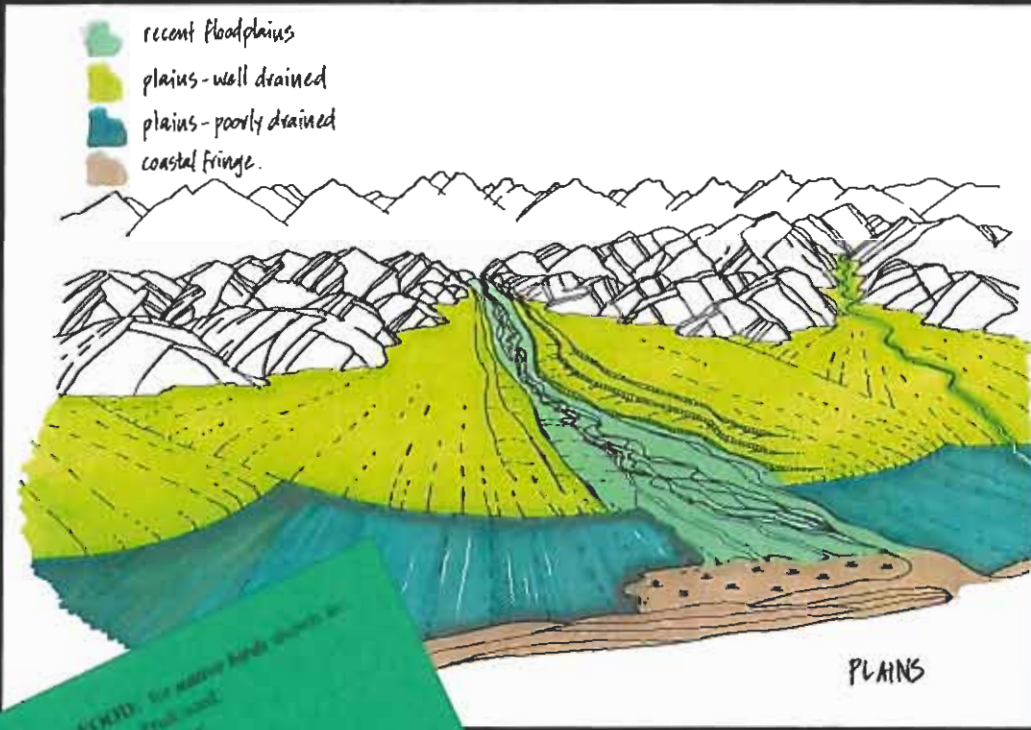


PLANT LISTS Selected from vegetation n

TALL TREES
Dacrycarpus dactyloides
Elaeocarpus dentatus; E. hookerianus
Prumnopitys taxifolia

TREES & TALL SHRUBS
Carpodetus serratus
Coprosma lucida; C. robusta
Cordylina australis
Grisebina littoralis
... angustifolia
... scoparium

.....stones, soils and plants that belong naturally in this place



- recent floodplains
- plains - well drained
- plains - poorly drained
- coastal fringe.

Food: F = native birds, F = Fruit/eat, N = Nectar, B = Bird/Eggs, L = Insects, For Insects: L = fruit
 Plant tolerances for many: d = dry, m = moist, dr = dry and windy conditions above sea level
 ■ = tolerant of shade, □ = intolerant, * = to establish, protect from frost, 1 = 1 year, for bushes
 Understorey: C = sand abundance on site over grasses (see notes) 2 = (tolerant/establish) with some pool.

© Christchurch Orauaki Indigenous Ecosystems, Lionel Apollon, 1997 for the Agency for Environment & Conservation

ecosystem

...atural to these wet Taitapu soils

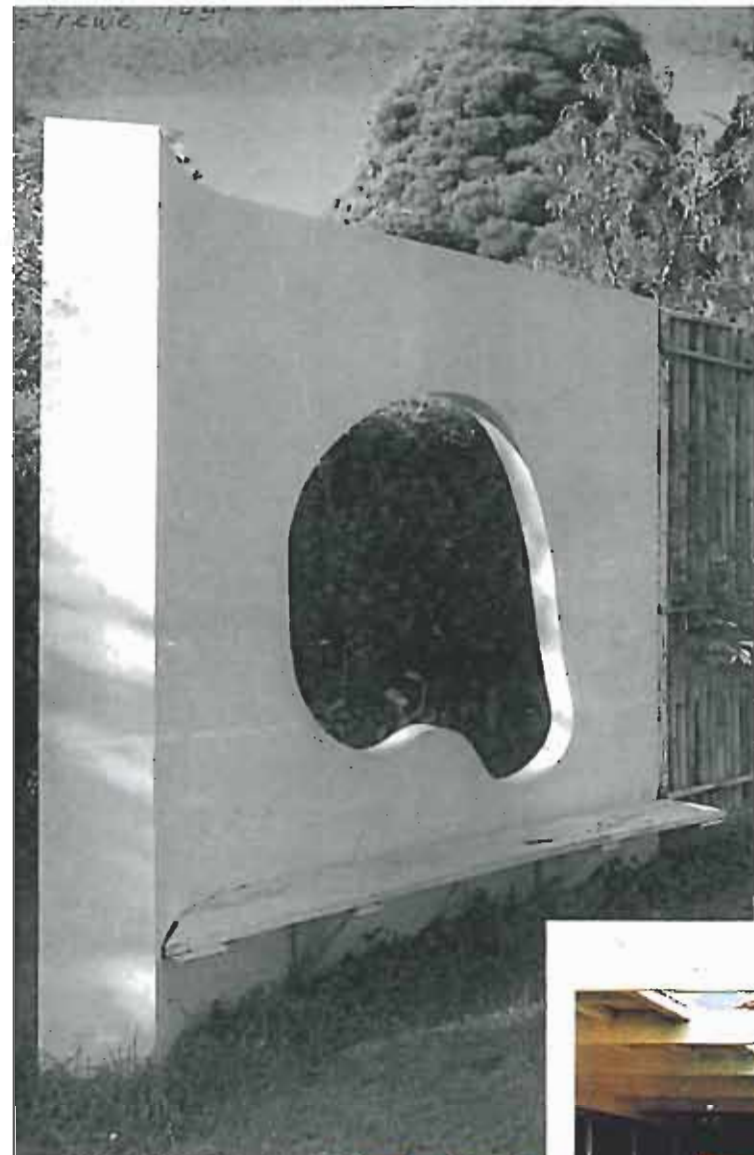
| | | | | | | | | | | | | | | | |
|---------------------------------|---------|--|--|--|--|--|--|--|--|--|--|--|--|--|--|
| kahikatea, white pine | FOOD: F | | | | | | | | | | | | | | |
| hinau, pokaka | F | | | | | | | | | | | | | | |
| matua, black pine | F | | | | | | | | | | | | | | |
| putaputaweta, marbled leaf | | | | | | | | | | | | | | | |
| karamu | | | | | | | | | | | | | | | |
| ti kouka, cabbage tree | | | | | | | | | | | | | | | |
| kapuka, broadleaf | | | | | | | | | | | | | | | |
| houhere, narrow-leaved lacebark | | | | | | | | | | | | | | | |
| manuka, tea tree | | | | | | | | | | | | | | | |
| rohutu, NZ myrtle | | | | | | | | | | | | | | | |
| poataniwha | | | | | | | | | | | | | | | |
| kaikomako | | | | | | | | | | | | | | | |

Tolerances

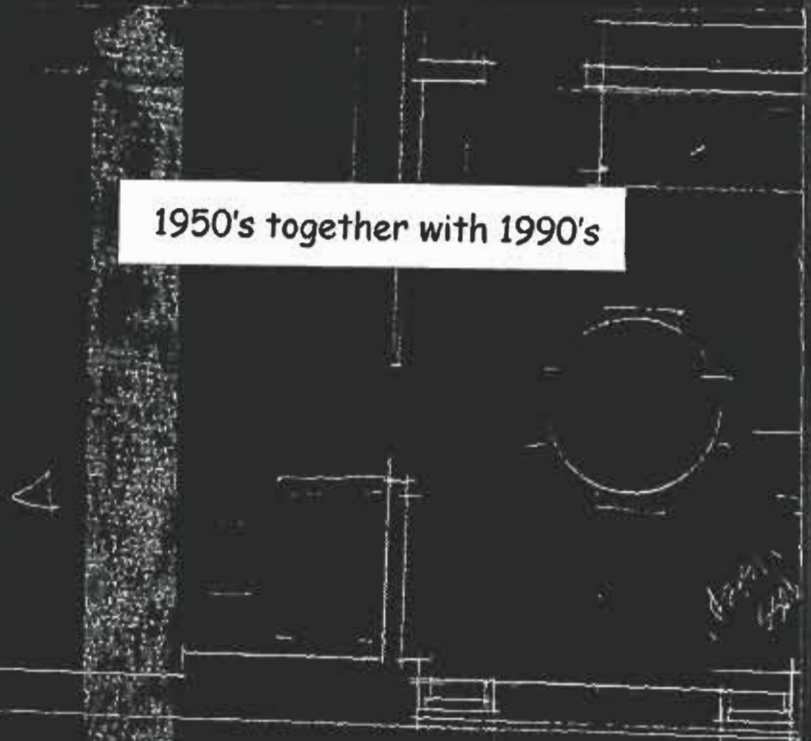
FOOD: F, N, B, L
 PLANT TOLERANCES: d, m, dr, *
 UNDERSTOREY: C, 2



ETFEWC 1951



1950's together with 1990's



steps 'float'
house to
curved glazed
to be a curved
large & door
stairs. This
also also dining
walked roof to channel

1100 granite
oriented same
to pty. (same
otherside)

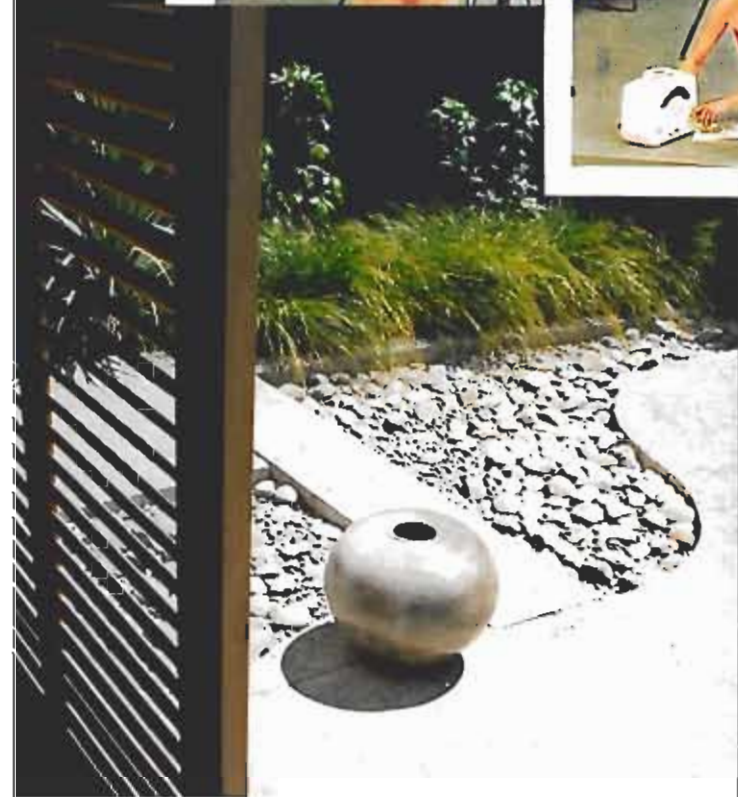
position to confirm

1.2m

check
↑
↓



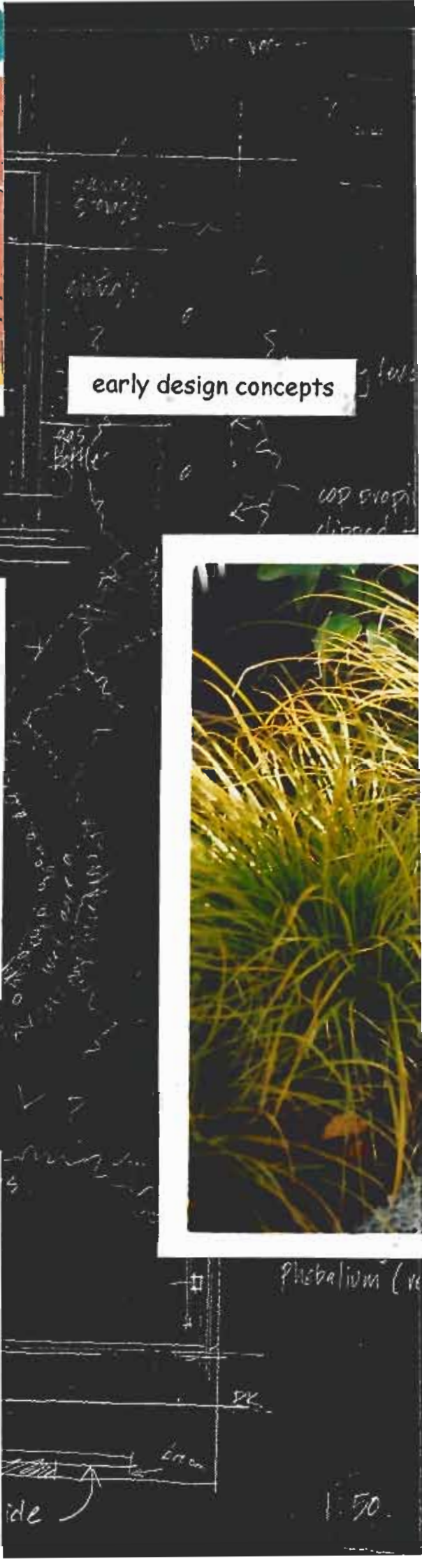
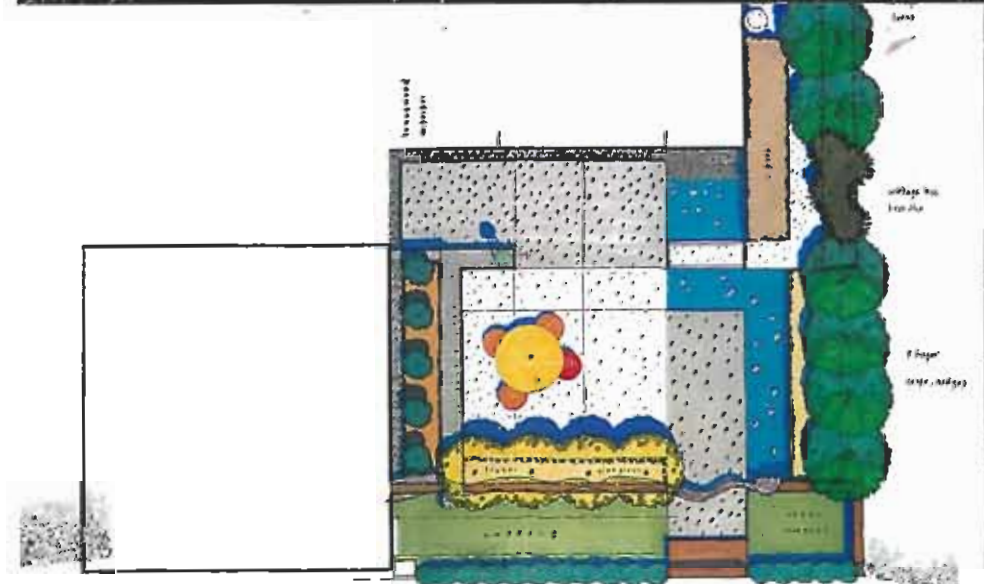
home ? building . 1955



id ?
(others)

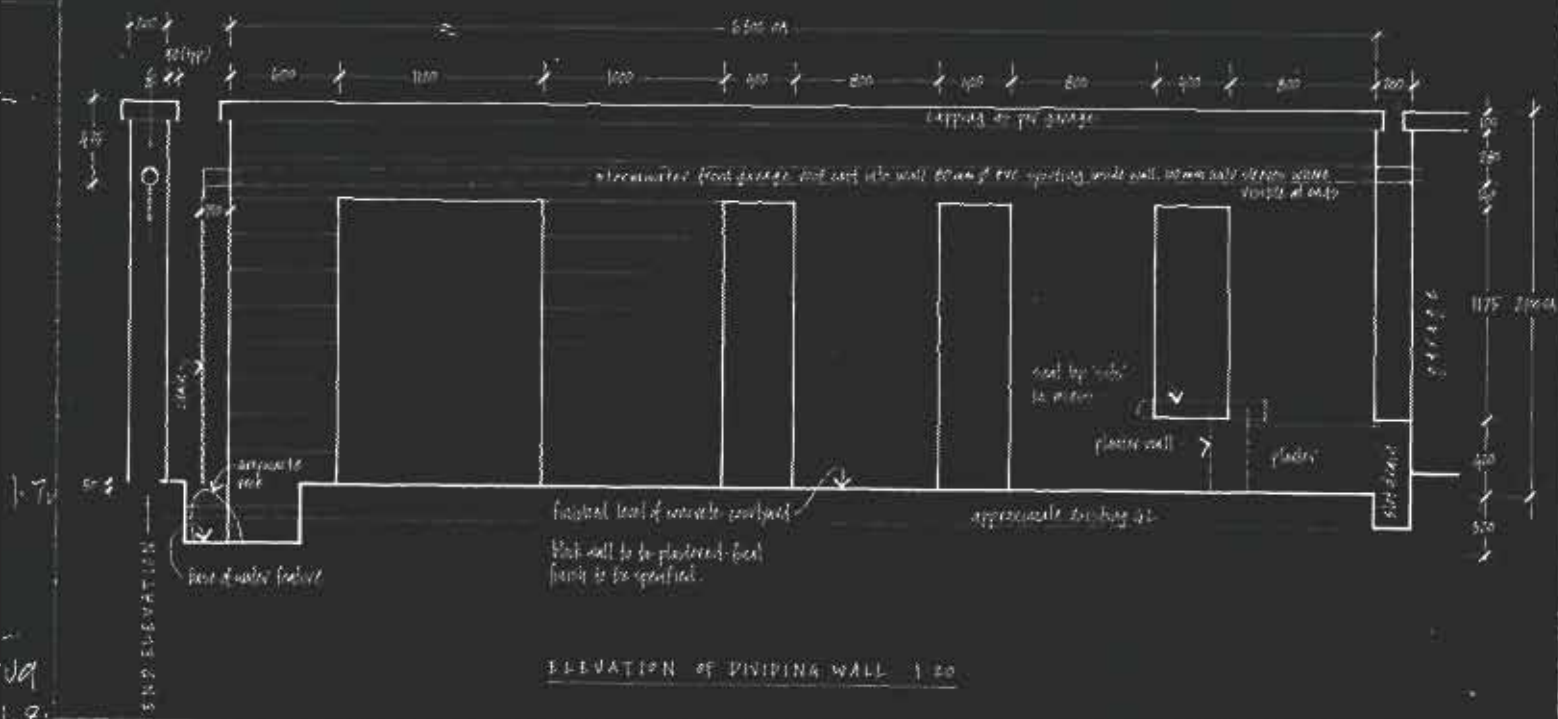


early design concepts



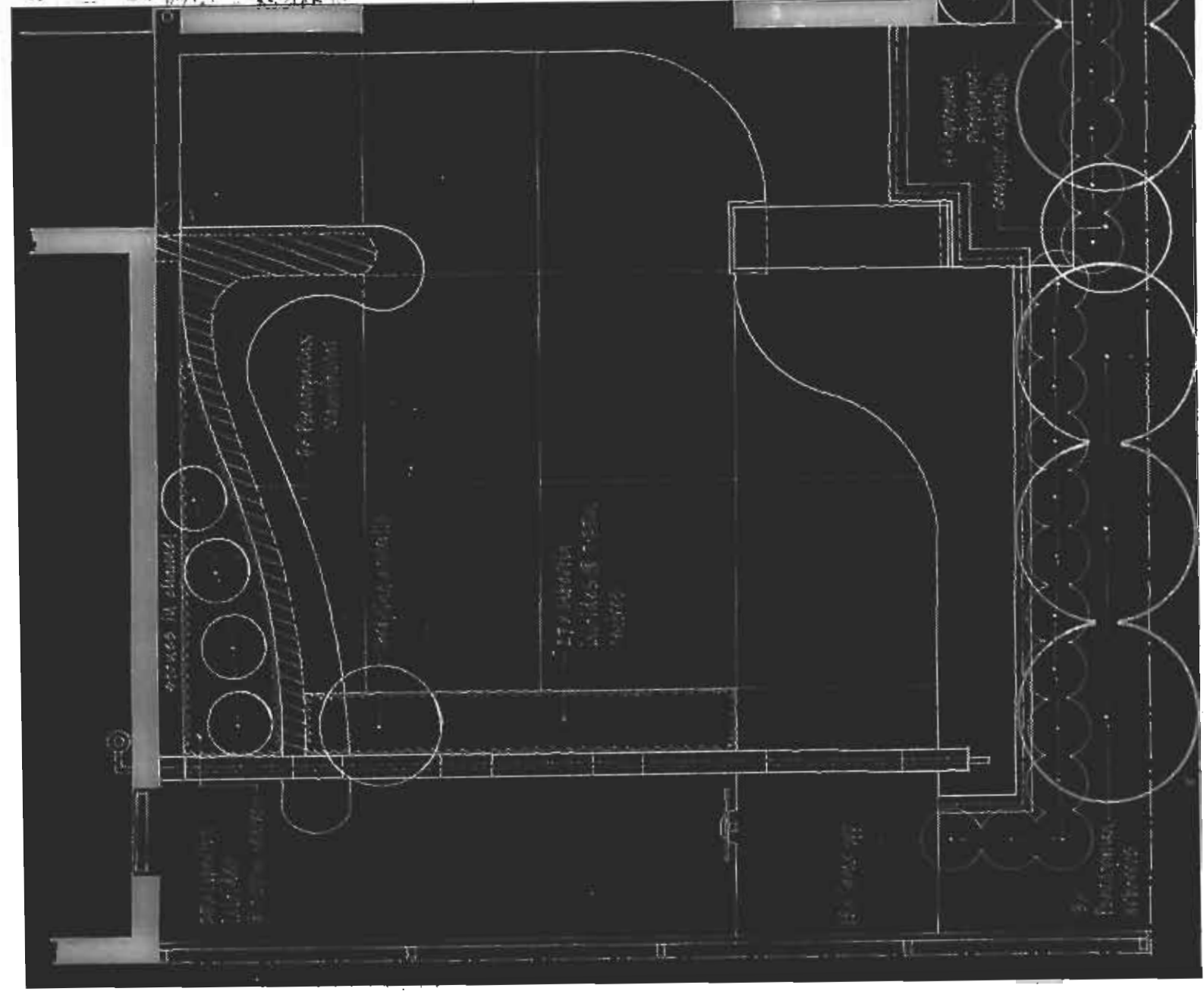
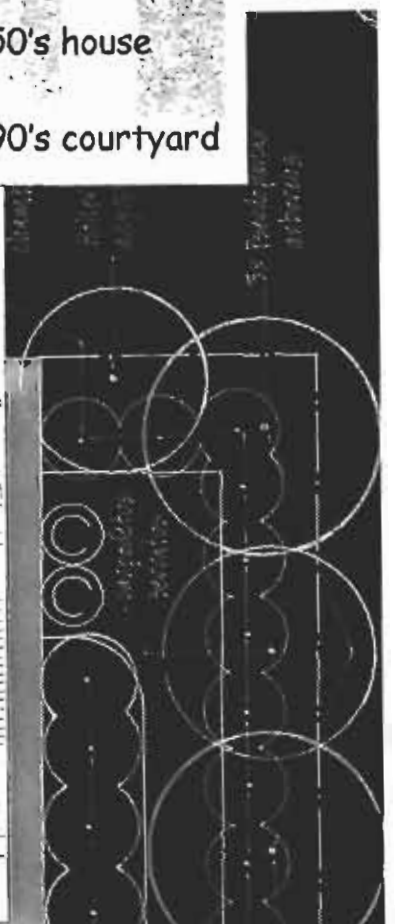
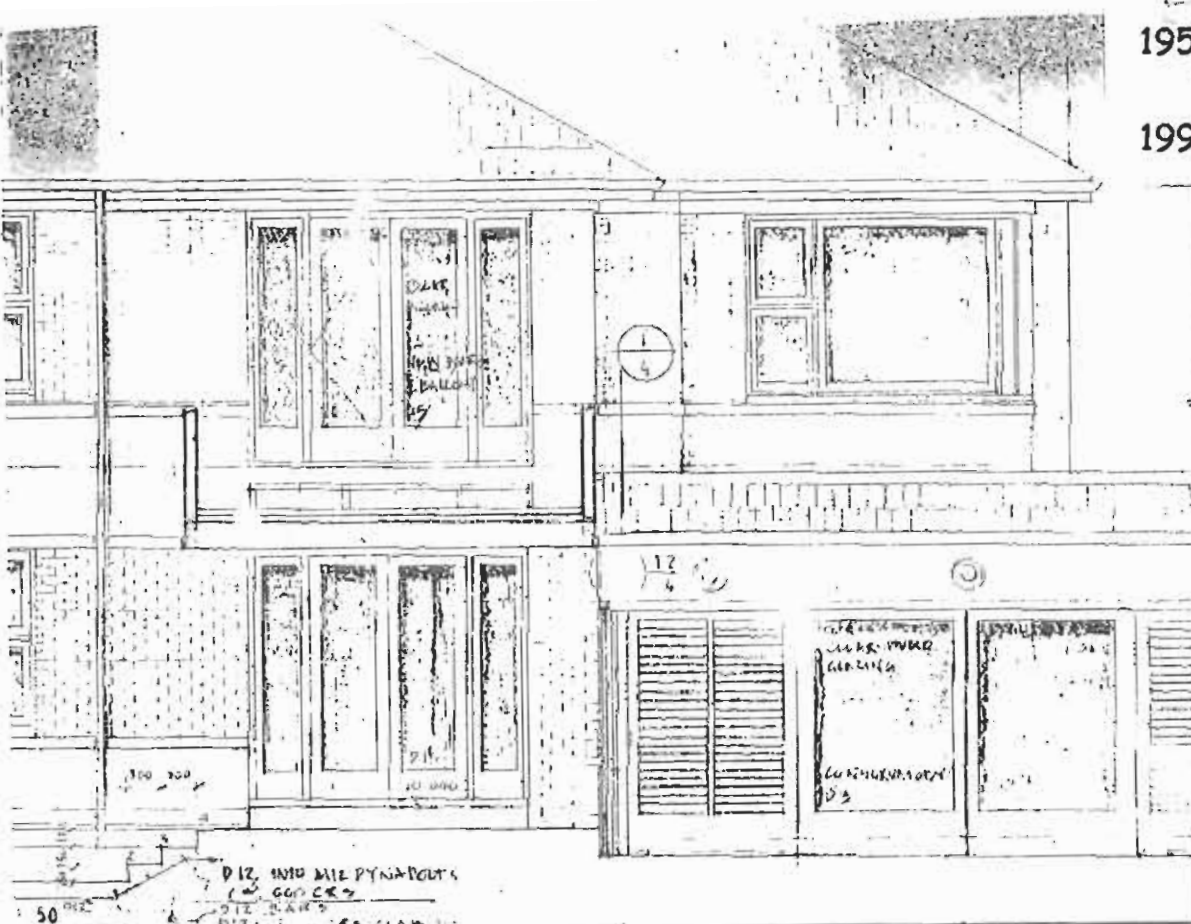
Phoebeium (re

1.50



1950's house

1990's courtyard



Lucas Associates



Landscape planning
Design
Resource management
Heritage conservation
Landscape ecology



