

Marokapara



Courtyard

Marokapara Courtyard

Located within the four avenues of the central city, in the kahikatea ecosystem of the lower Waimakariri plains of Otautahi Christchurch.

Formerly a cobblestone car park with peripheral planting, a small inner city site was created by construction of studio and garage on two sides, with boundary fences on the other two.

Private from the street but overlooked by neighbours and by owner's upstairs apartment balcony. A courtyard required for work and private use, daytime and evenings, for sitting and socialising, for over-looking, for outdoor office, for client discussions, and, for clothes drying and a few kitchen supplies.

Character required to celebrate the underlying nature of this place, the lived in place of central Christchurch.

The Nature

The plains a sequence of terraces built by the Waimakariri, of greywacke, rounded, layered, sorted, overlaying and overlain, niches of forest soils developing, a low rainfall climate, but water stored naturally; kahikatea forest belongs.

Lived-in

Over the braided alluvial patterns, in both town and country, the grid. Rurally, square expanses of single-species monocot crop traditionally stand tall. In town the grid squares are mostly built over. The vegetation is pushed to the edges and niches.

DESIGN CONCEPT

The garage roof garden as on the upper plains, crop clothed, collecting the water, conveying it under to emerge through the terraces below.

Concrete to express this place, with greywacke our most sustainable resource.

The courtyard walled and urban. Built over with niches for vegetation - all plants nature intended in this place, but sorted, selected, separated, lined and trimmed for the cityscape.

Braided plainescape weaving through with greywacke sorted, terraced, embedded and ground down, or free and channelling the rainwater.

Design and supervision by Lucas Associates landscape architects

(Di Lucas, Jeremy Head, Nikki Grey, Annabel Riley)

Implementation by builder Peter O'Neill in 1998.

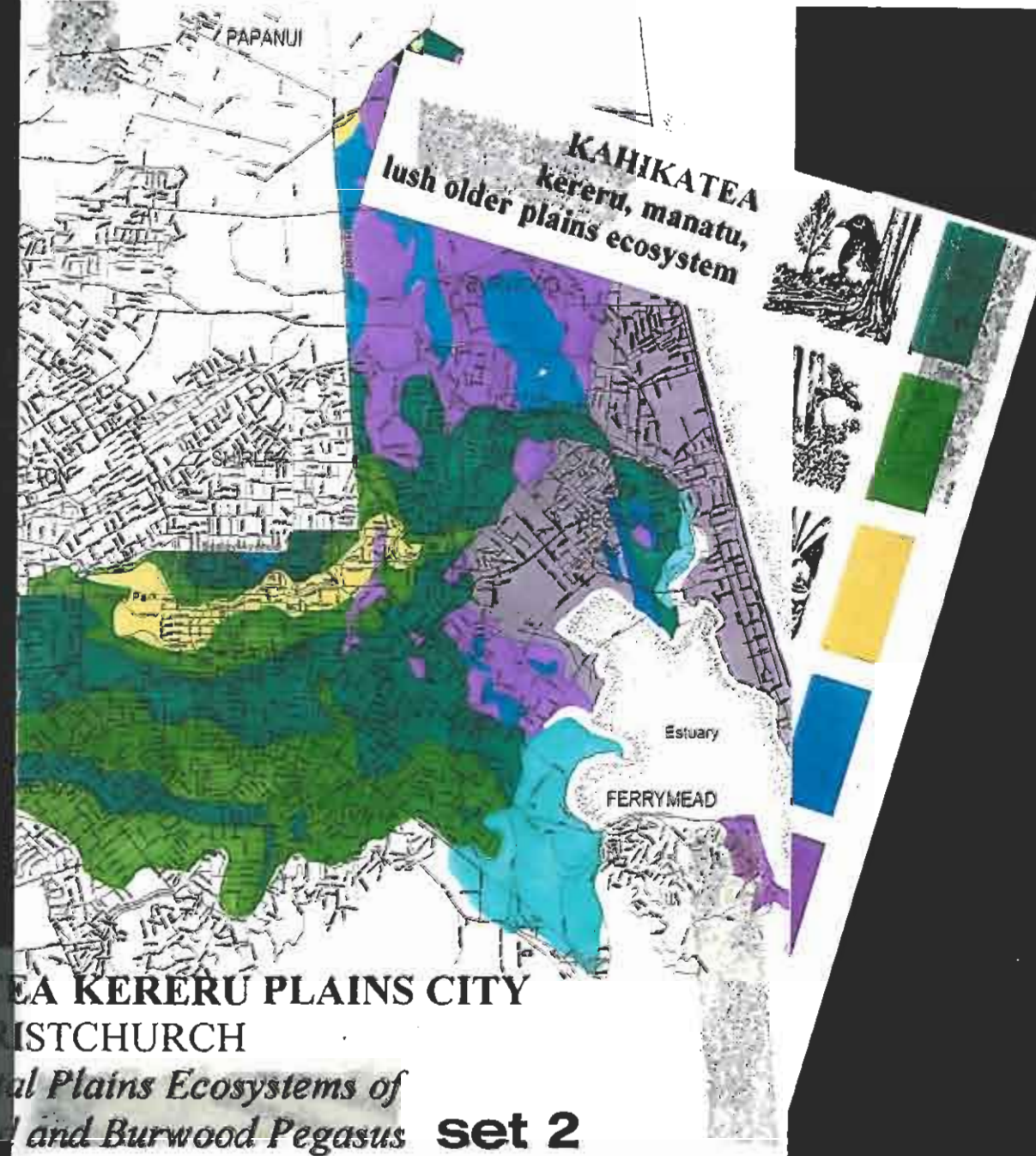
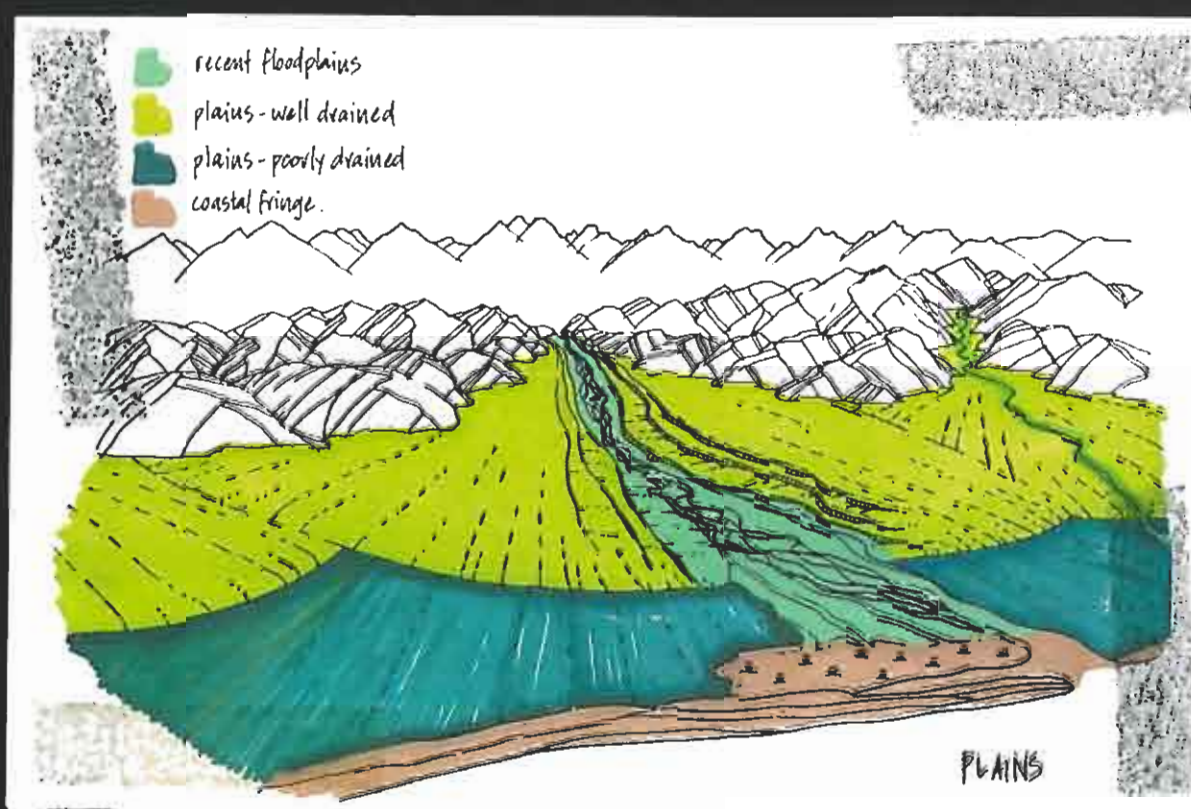
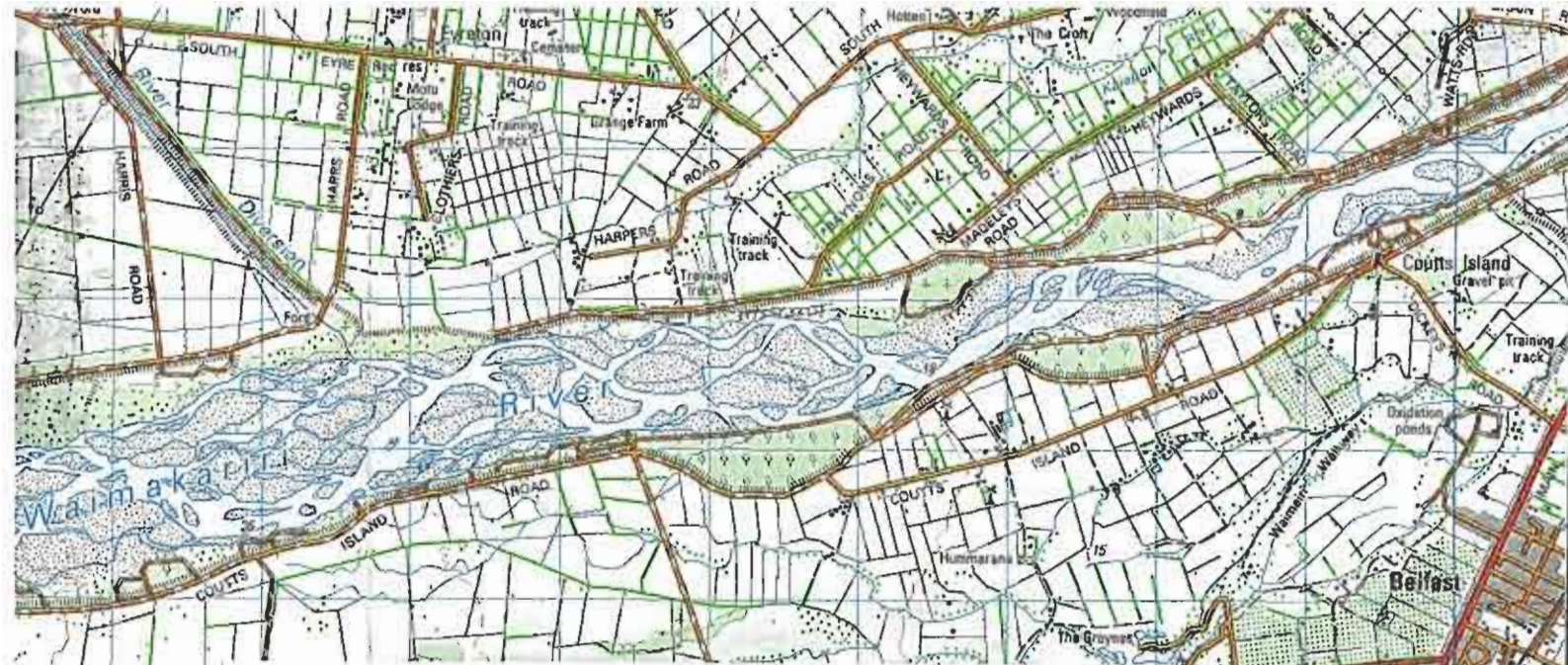
Lucas Associates

Marokapara

351 Manchester Street

Otautahi Christchurch

November 1999



THE KAHIKATEA KERERU PLAINS CITY
 OTAUTAHI CHRISTCHURCH
*Indigenous Coastal Plains Ecosystems of
 Hailey Ferry Mead and Burwood Pegasus* set 2

KAIHĀKATEA, kereru, manatu, lush, older plains ecosystem

PLANT LISTS

Selected from vegetation natural to these wet Taupapā soils.
 For native birds: F - Fruittree, N - Native, B - Bird foliage, I - Insects, For Beasts: L - food
 Plant tolerances for sunny, shady, moist, dry and windy conditions shown as:
 L - tolerant in shade, S - intolerant, T - to establish, protected from frost
 Underlayers: Clay & sand showing in old bog growwider river areas (2-10mm rounded) with some pebbles
 © Christchurch Otago Indigenous Ecosystems

PLANT TOLERANCES
 For sunny, shady, moist, dry and windy conditions shown as:
 L - tolerant in shade, S - intolerant, T - to establish, protected from frost
 Underlayers: Clay & sand showing in old bog growwider river areas (2-10mm rounded) with some pebbles

TREES & TALL SHRUBS

✓ <i>Carpodetus serratus</i>	putaputaweta, marbleleaf	F,NI	■ ■ ■ ■ ■
<i>Coprosma lucida</i> , <i>C. robusta</i>	karamu	F	■ ■ ■ ■ ■
<i>Cordyline australis</i>	ti kouka, cabbage tree	F,NI	■ ■ ■ ■ ■
<i>Griselinia littoralis</i>	kapuka, broadleaf	F,B,N,I	■ ■ ■ ■ ■
✓ <i>Hobertia angustifolia</i>	houhere, narrow-leaved lacebark	F,I	■ ■ ■ ■ ■
<i>Leptospermum scoparium</i>	manuka, tea tree	NI	■ ■ ■ ■ ■
<i>Lophomyrtus obcordata</i>	rohutu, NZ myrtle	F,I	■ ■ ■ ■ ■
<i>Melicope simplex</i>	poataniwha	I,I	■ ■ ■ ■ ■
<i>Pennantia corymbosa</i>	kaikomako	F,NI	■ ■ ■ ■ ■
<i>Pittosporum eugenioides</i>	tarata, lemonwood	F,I	■ ■ ■ ■ ■
<i>Pittosporum tenuifolium</i>	kohuhu, black matipo	F,I	■ ■ ■ ■ ■
✓ <i>Phragmites regius</i>	manatu, lowland ribbonwood (deciduous)	F,I	■ ■ ■ ■ ■
✓ <i>Pseudopanax crassifolius</i>	lancewood, horoeka	F,NI,I	■ ■ ■ ■ ■
<i>Streblus heterophyllus</i>	turepo, small-leaved milk tree	F	■ ■ ■ ■ ■

SHRUBS

- ✓ *Coprosma propinqua*
- Coprosma rubra*
- Hebe salicifolia*
- Myrsine divaricata*
- Pseudopanax anomalus*

GROUNDCOVERS

